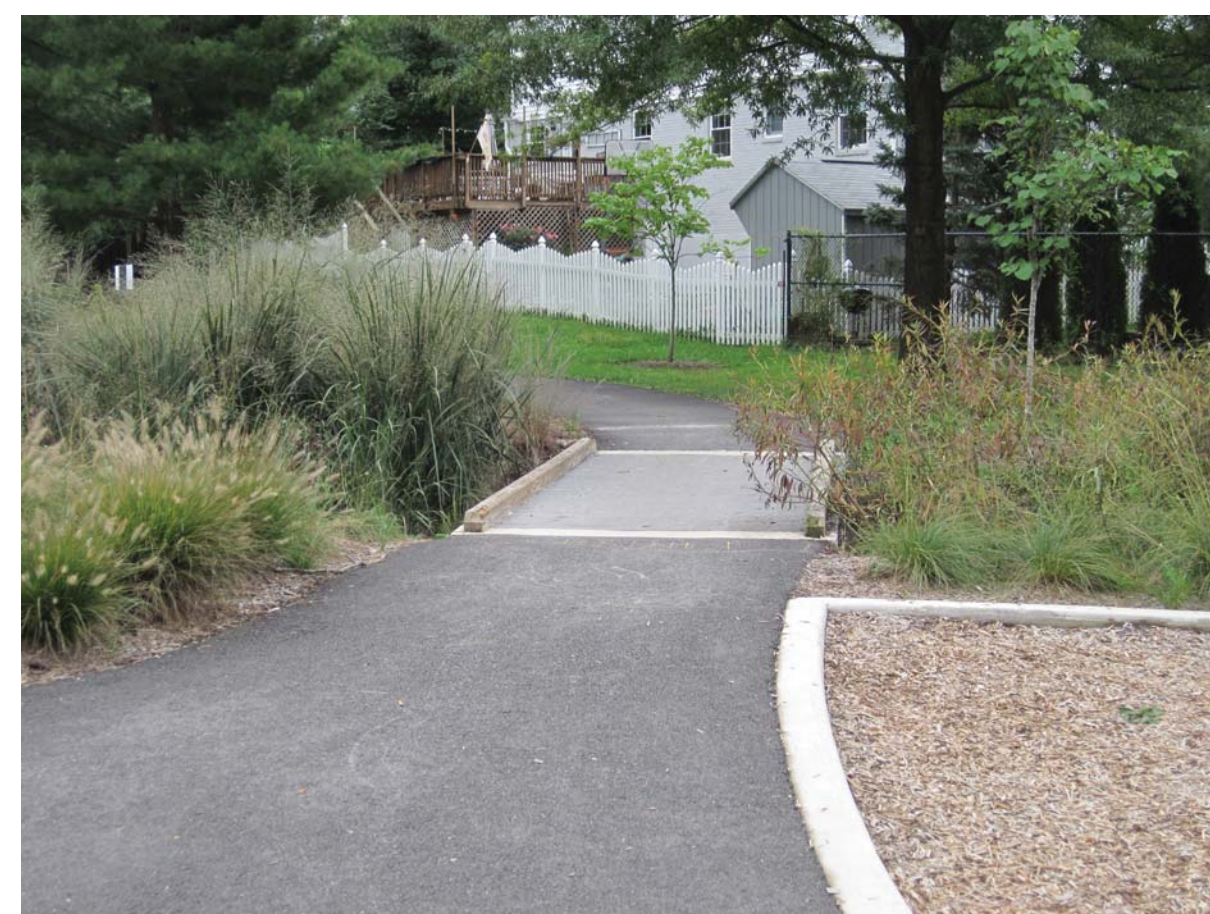
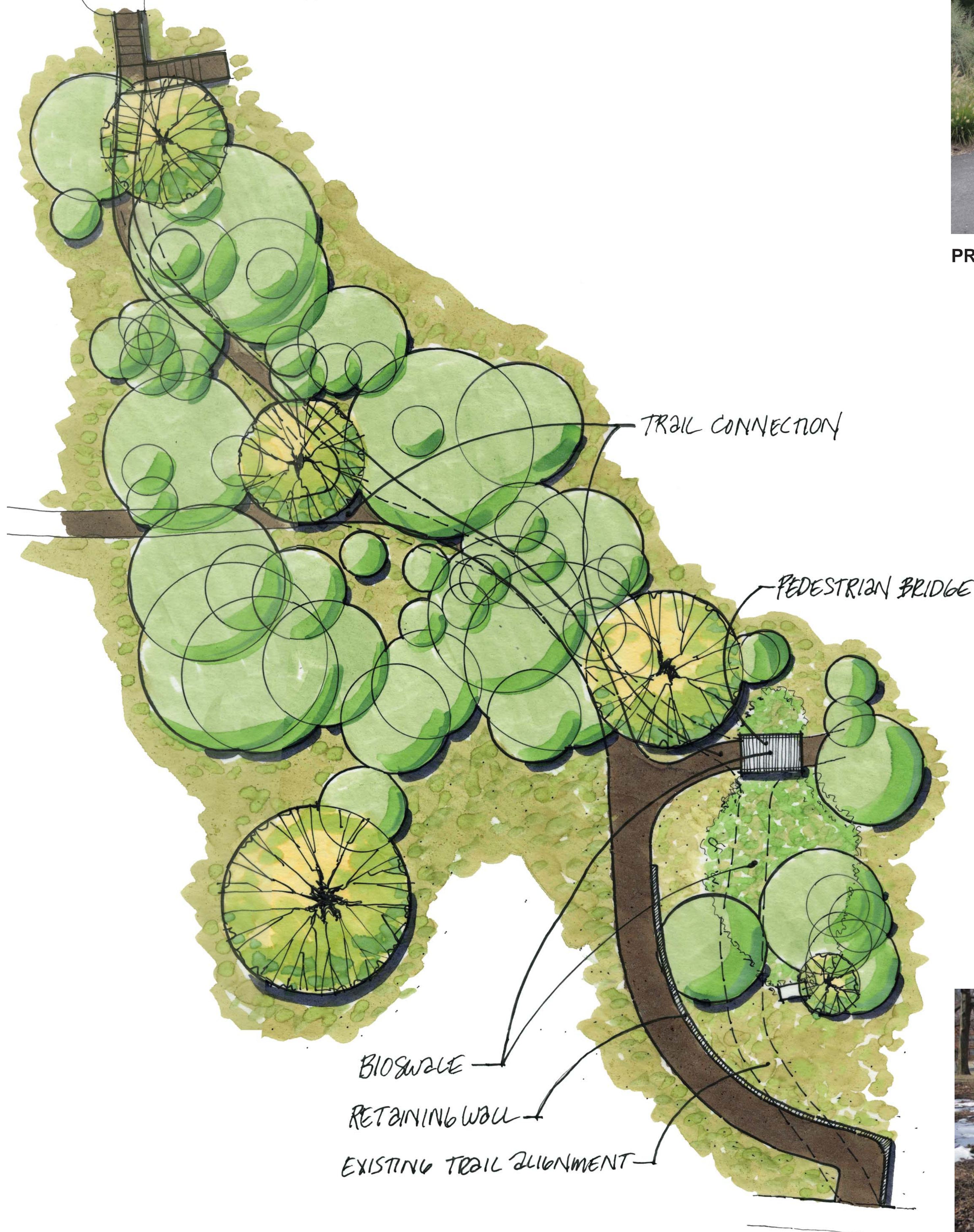


RANDOLPH ELEMENTARY



PROPOSED



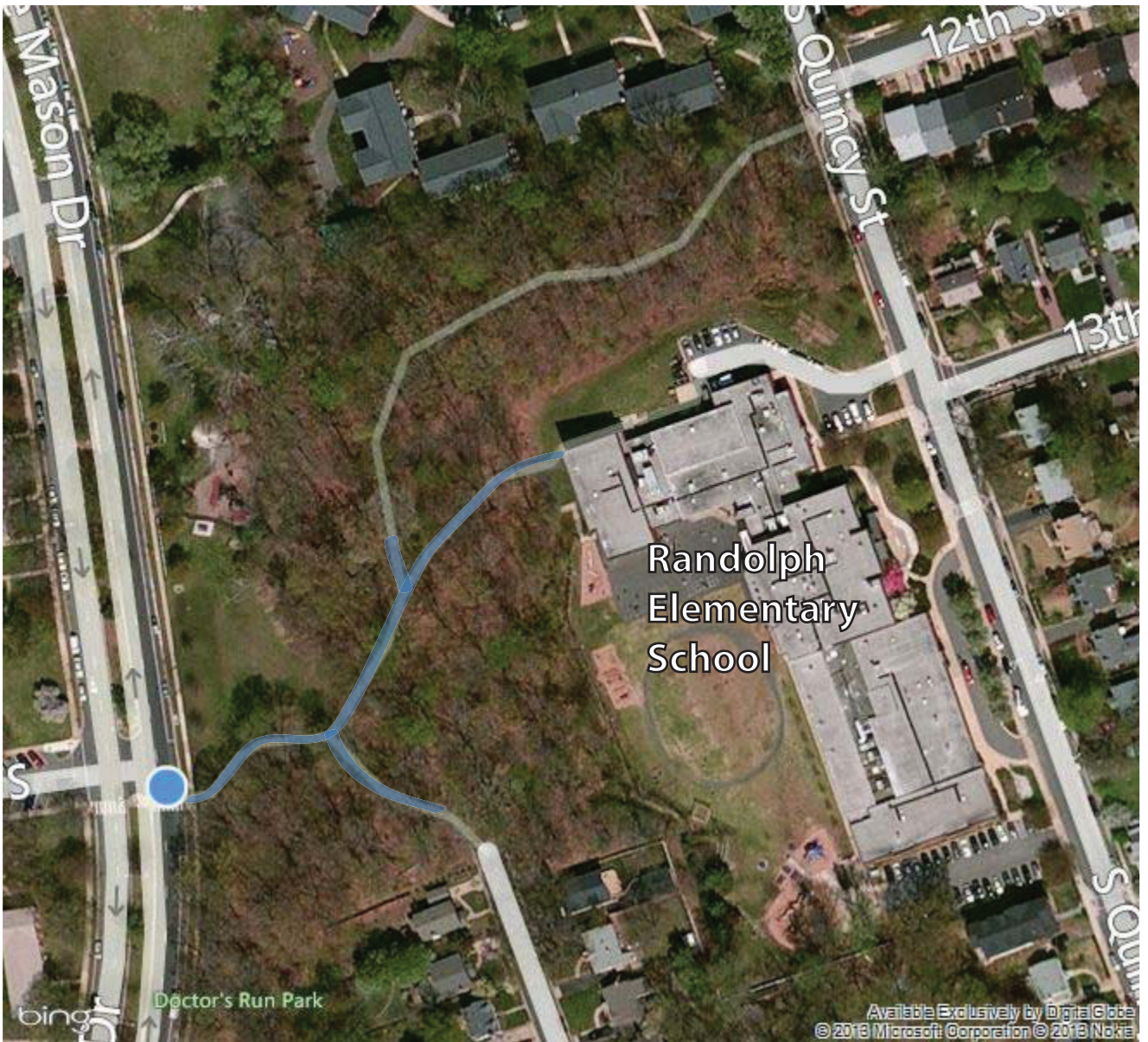
PROJECT GOALS FOR DOCTOR'S RUN TRAIL IMPROVEMENTS AND LIGHTING

- 1) Light the trail with 7-8 LED, pedestrian lights with full cutoff. These lights are to be on a timer coordinated with the school's extended day program to shut off at 6PM.
- 2) Remove existing asphalt trail and replace with new, improved trail. New trail shall be wider where possible to make trail inclusive for pedestrians and cyclists. It shall also have softer slopes where possible.
- 3) Add concrete steps at the rear entrance of Randolph Elementary School.
- 4) Preserve the existing tree canopy. There shall be no trenching during lighting install.
- 5) Improve site drainage. Replace asphalt drainage with vegetated swale. Connect existing trail branches with a pedestrian bridge.



EXISTING CONDITIONS





Imagery courtesy
Bing® / Microsoft®

**Approximate project
area shown with blue
highlighting.**